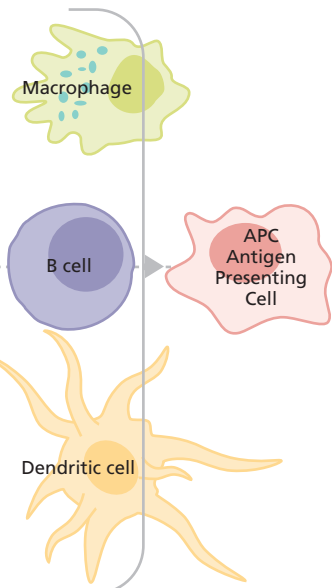
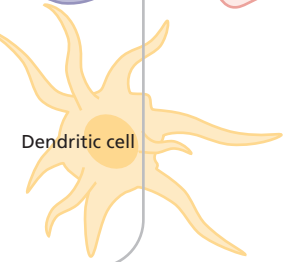


## Intracellular Bacterial Antigen Driven



## Extracellular Allergen Antigen Driven

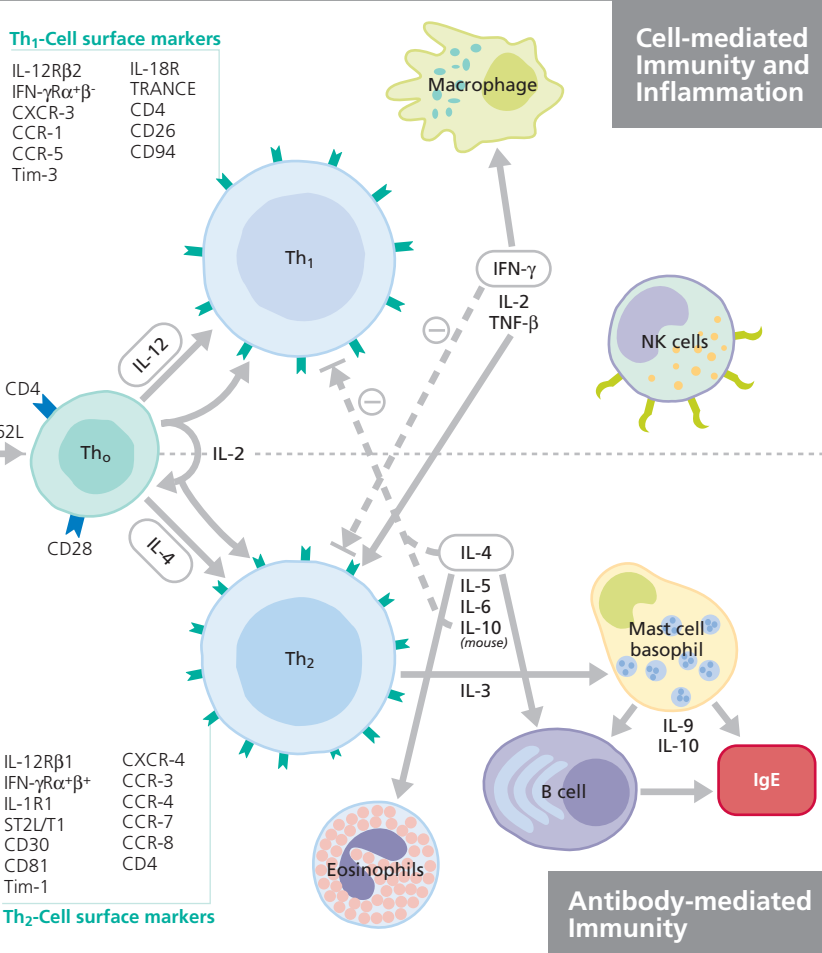


### Th<sub>1</sub>-Cell surface markers

IL-12Rβ2	IL-18R
IFN-γRα+β <sup>+</sup>	TRANCE
CXCR-3	CD4
CCR-1	CD26
CCR-5	CD94
Tim-3	

IL-12Rβ1	CXCR-4
IFN-γRα+β <sup>+</sup>	CCR-3
IL-1R1	CCR-4
ST2L/T1	CCR-7
CD30	CCR-8
CD81	CD4
Tim-1	

### Th<sub>2</sub>-Cell surface markers



## Cell-mediated Immunity and Inflammation

## Antibody-mediated Immunity